



HEAD PADEL COLLECTION 2022

HEAD[®]
.COM

RACQUET TECH

AUXETIC SENSATION

Feel every shot and get more confident in your game with HEAD Auxetic technology. It actively responds, giving real-time, super-accurate feedback. It really is sensational.



WHAT IS AUXETIC?

Auxetic constructions show a unique deformation compared to non-Auxetic constructions. Due to their internal properties, Auxetic constructions widen when a “pull” force is applied and contract when squeezed. The bigger the applied force, the bigger the Auxetic reaction.



WHERE IS AUXETIC LOCATED ON OUR PADEL RACQUETS?

Auxetic is designed to react to ball impact and give the best impact feel by adapting its internal structure. Based on extensive research, we optimized its placement in the carbon fiber engineered yoke piece of the racquet.



WHAT IS THE BENEFIT OF AUXETIC?

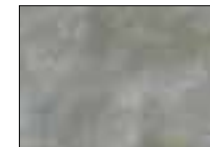
Auxetic actively responds by adapting its internal structure giving superb feedback and a good solid impact feel. On ball impact, a big force is applied to the yoke piece, caused by the hitting surface pulling it towards the center of the racquet. Depending on where the ball hits the string bed, the force of the impact will be applied at different locations in the yoke piece.

GRAPHENE INSIDE

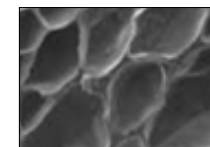
Strategically positioned in most of our racquets, Graphene strengthens the frame, provides greater stability and optimises energy transfer from racquet to ball. When you buy your next racquet, be sure it has GRAPHENE INSIDE.



RACQUET SUBTECHS



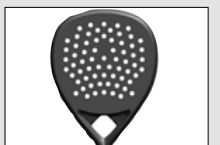
Power foam is the perfect ally for maximum power. The speed your ball will reach will surprise your opponents as much as yourself.



Comfort foam is the ideal pick for the player who wants maximum comfort. It also absorbs the vibrations at the same time as increasing the power of your shot.



Soft foam features a ultra-fast memory that maximizes sweet spot and comfort when hitting.



The identity of every racquet is unique; some are characterized by control and precision, others by power or spin. For this, HEAD has developed the Optimized Sweet Spot in order to adapt every drilling pattern to the particularities of each racquet.



Extreme spin is a rough surface with circular form that multiplies the extreme spin on the ball.



Every single racquets has its own DNA. Some will feature control and precision, other power or comfort. For this reason, HEAD has developed the Smart Bridge to adapt the bridge area to the needs of each racquet.



Every frame section is individually constructed to achieve the best performance for each racquet.



Special polymer foil made to increase the durability of the racquet to protect the racquet from bumps and scratches.



The Integrated Protector is a pre-molded carbon bumper that protects your racquet from chips and scratches, which extends the lifetime of your racquet.



AGUSTÍN GUTIÉRREZ



ARTURO COELLO



PAULA JOSEMARÍA MARTÍN

PERFORMANCE
IS A
HEAD GAME

HEAD®



ARIANA SANCHEZ FALLADA



TAMARÁ ICARDO ALCORISA



EDUARDO ALONSO CHILLARÓN



SANYO - CARLOS DANIEL GUTIÉRREZ

DELTA RACQUETS



DELTA RACQUETS

Feel the power.
Designed for experienced players who are seeking more power, the oversized, diamond-shaped DELTA racquet series has been upgraded with new Auxetic construction for sensational feel.



ANTI SHOCK



DELTA PRO 2022

ARTICLE NUMBER	228102
HEAD SIZE	475 cm² / 74 in²
SHAPE	Diamond
WEIGHT	375 g / 13.2 oz
BALANCE	272 mm



ANTI SHOCK



DELTA MOTION 2022

ARTICLE NUMBER	228112
HEAD SIZE	475 cm² / 74 in²
SHAPE	Diamond
WEIGHT	360 g / 12.7 oz
BALANCE	268 mm



ANTI SHOCK



DELTA ELITE 2022

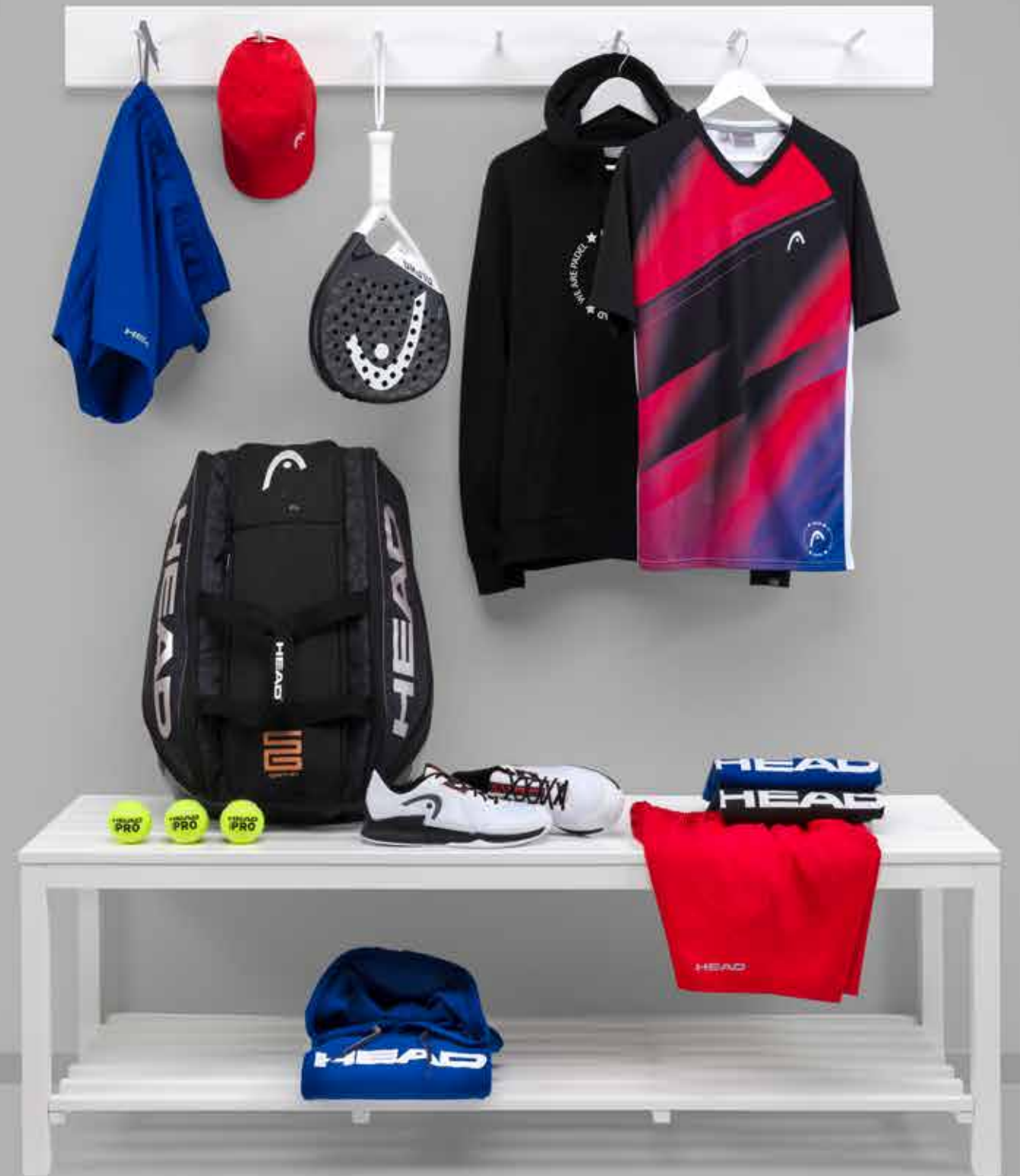
ARTICLE NUMBER	228122
HEAD SIZE	475 cm² / 74 in²
SHAPE	Diamond
WEIGHT	360 g / 12.7 oz
BALANCE	270 mm

NEW



DELTA

ALPHA RACQUETS



ALPHA RACQUETS

Magic Touch.
The perfect balance between control and power. Made with HEAD's own innovation, including Graphene 360+ technology and Woven Carbon, these racquets offer unparalleled comfort and feel. Manage and control the game like never before.



ANTI SHOCK ()



ANTI SHOCK ()



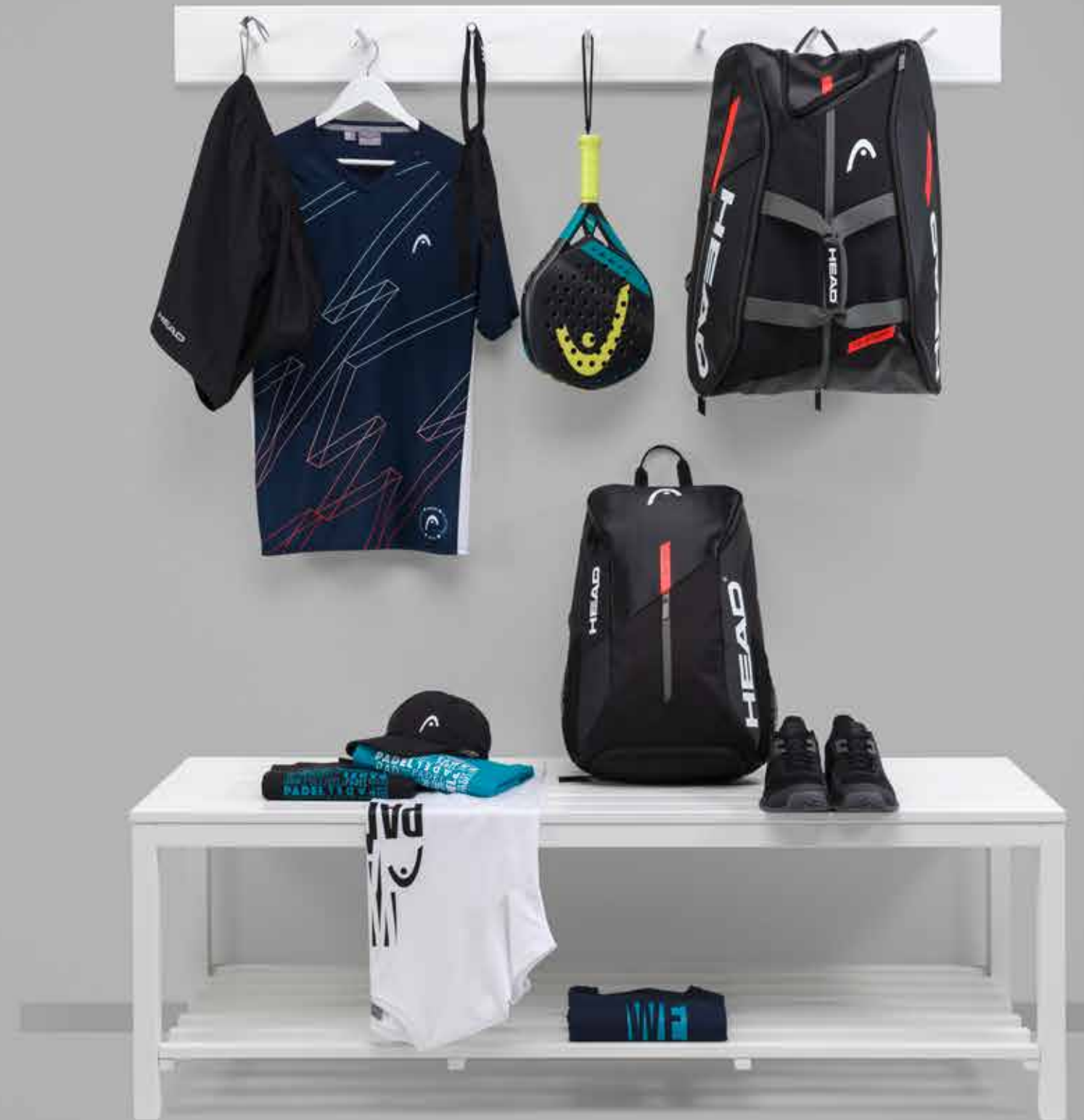
ANTI SHOCK ()



	GRAPHENE 360+ ALPHA PRO	GRAPHENE 360+ ALPHA MOTION	GRAPHENE 360+ ALPHA ELITE
ARTICLE NUMBER	228131	228141	228151
HEAD SIZE	465 cm² / 72 in²	465 cm² / 72 in²	465 cm² / 72 in²
SHAPE	Teardrop	Teardrop	Teardrop
WEIGHT	375 g / 13.2 oz	365 g / 12.9 oz	370 g / 13.1 oz
BALANCE	270 mm	270 mm	265 mm



GAMMA RACQUETS



GAMMA RACQUETS

Show your Versatility.
A highly distinctive geometric design comes with astonishing versatility in the Gamma series. Engineered with Graphene 360+ technology, these racquets deliver superior comfort and touch, and the perfect blend of power and control.



GRAPHENE 360+ GAMMA PRO

ARTICLE NUMBER	228161
HEAD SIZE	455 cm ² / 71 in ²
SHAPE	Round
WEIGHT	370 g / 13.1 oz
BALANCE	265 mm

GRAPHENE 360+ GAMMA MOTION

ARTICLE NUMBER	228171
HEAD SIZE	455 cm ² / 71 in ²
SHAPE	Round
WEIGHT	360 g / 12.7 oz
BALANCE	265 mm



ZEPHYR RACQUETS

Keep it light.
Lightweight, with a soft and comfortable feel, and easy to play with, the ZEPHYR lets your game flow. Designed for intermediate and improving casual players, the ZEPHYR is built with Graphene 360+ technology for enhanced flex and feel.



	ZEPHYR PRO 2022	ZEPHYR 2022	ZEPHYR UL 2022
ARTICLE NUMBER	228202	228212	228222
HEAD SIZE	490 cm² / 76 in²	490 cm² / 76 in²	490 cm² / 76 in²
SHAPE	Round	Round	Round
WEIGHT	365 g / 12.9 oz	345 g / 12.2 oz	340 g / 12.0 oz
BALANCE	270 mm	270 mm	270 mm

NEW



ZEPHYR

FLASH RACQUETS

Switch on instant power.
Designed for casual and intermediate players, the oversized, teardrop-shaped FLASH offers power, as well as a soft playing feel, and a large sweetspot for more tolerance and forgiveness.



	FLASH PRO 2022	FLASH_GR_YE 2022	FLASH_BL_PI 2022
ARTICLE NUMBER	228252	228262	228272
HEAD SIZE	525 cm² / 81 in²	525 cm² / 81 in²	525 cm² / 81 in²
SHAPE	Teardrop OS	Teardrop OS	Teardrop OS
WEIGHT	365 g / 12.9 oz	360 g / 12.7 oz	360 g / 12.7 oz
BALANCE	275 mm	265 mm	265 mm

NEW



FLASH

EVO RACQUETS

Join the Evolution.
Enjoy modern comfort and power from the very first time you step on a padel court. Made for new players, the EVO series offers oversized, teardrop-shaped racquets with large sweetspots. Soft foam improves comfort while the Innegra technology enhances shock absorption and stability.



	EVO DELTA 2022	EVO SANYO
ARTICLE NUMBER	228282	228291
HEAD SIZE	511 cm² / 79 in²	511 cm² / 79 in²
SHAPE	Teardrop OS	Teardrop OS
WEIGHT	365 g / 12.9 oz	365 g / 12.9 oz
BALANCE	275 mm	275 mm

JUNIOR RACQUETS

For the next Generation.
Lighter than adult racquets but made with the same innovative technologies and materials, the JUNIOR series is designed for competitive juniors.



	DELTA JUNIOR 2022	MONSTER KIDS 2022	ALPHA JUNIOR "SANYO"
ARTICLE NUMBER	228302	228322	228311
HEAD SIZE	525 cm² / 81 in²	365 cm² / 57 in²	525 cm² / 81 in²
SHAPE	Teardrop OS	Teardrop	Teardrop OS
WEIGHT	320 g / 11.3 oz	300 g / 10.6 oz	320 g / 11.3 oz
BALANCE	275 mm	255 mm	275 mm

PADEL BALLS

YOUR CHOICE



SPEED

FOR A FASTER GAME

PADEL PRO S

YOUR GAME



CONTROL

FOR MORE CONTROL

PADEL PRO

BALLS

PADEL BALLS

Our premium HEAD balls feature our latest technologies and are made for high performance club players and also for beginners. Choose these balls for speed and control.



HEAD PADEL PRO S - 6DZ

ARTICLE NUMBER 575713



3B HEAD PADEL PRO - 6DZ

ARTICLE NUMBER 575613



3B HEAD PADEL - 6DZ

ARTICLE NUMBER 575603

BALLS

PADEL RACQUETS

BALLS

BAGS

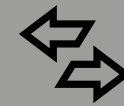
FOOTWEAR

ACCESSORIES

PADEL BAGS



BAG FEATURES



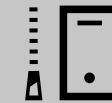
2 WAY CARRY SYSTEM

Pick whether you want to carry the bag over your shoulder or on your back.



ACCESSORY POCKET

Pockets for your accessories.



ACCESSORY ZIPPER POCKET

Pockets for your accessories with a zipper.



CCT+ CLIMATE CONTROL PLUS

Protect your rackets from extreme temperatures.



RACKET CAPACITY

The number of rackets that fit into the bag.



RACKET COMPARTMENT

The number of racquet compartments the bag has.



SHOE COMPARTMENT

The bag has a separate shoe compartment.

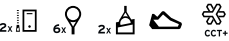


DELTA



DELTA SPORT BAG

ARTICLE NUMBER	283712
DIMENSIONS	60 x 30,5 x 31
MATERIAL	55% POLY, 45% PU
COLORS	GROR



DELTA BACKPACK

ARTICLE NUMBER	283722
DIMENSIONS	35.5 x 46 x 24
MATERIAL	75% POLY, 25% PU
COLORS	GROR



DELTA POUCH

ARTICLE NUMBER	283732
DIMENSIONS	26 x 17
MATERIAL	55% PU, 45% POLY
COLORS	GROR

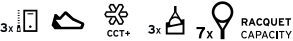


ALPHA



ALPHA SANYO MONSTERCOMBI

ARTICLE NUMBER	283742
DIMENSIONS	60*29*41.5
MATERIAL	75% POLY, 25% PU
COLORS	BKBK



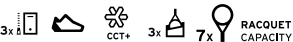
ALPHA SANYO BACKPACK

ARTICLE NUMBER	283762
DIMENSIONS	34*50*24
MATERIAL	75% POLY, 25% PU
COLORS	BKBK



ALPHA MONSTERCOMBI

ARTICLE NUMBER	283782
DIMENSIONS	60*29*41.5
MATERIAL	75% POLY, 25% PU
COLORS	WHRS



ALPHA BACKPACK

ARTICLE NUMBER	283792
DIMENSIONS	34*50*24
MATERIAL	75% POLY, 25% PU
COLORS	WHRS



TOUR TEAM



BKOR



BKMI



BLNV

TOUR TEAM PADEL MONSTERCOMBI

ARTICLE NUMBER	283772
DIMENSIONS	60*28*43
MATERIAL	60% POLY, 40% PU
COLORS	BKMI BKOR BLNV

1x 1x 3x CCT+ 7x RACQUET CAPACITY



BKOR



BKMI



BLNV



RSWH



BKRD

TOUR TEAM BACKPACK

ARTICLE NUMBER	283512
DIMENSIONS	33.5*51*25
MATERIAL	80% Polyester / 20% PU
COLORS	BKMI BKOR BKRD BLNV RSWH

2x 1x 1x 1x

ELITE



GROR



BLNV



BKWH

ELITE PADEL SUPERCOMBI

ARTICLE NUMBER	283702
DIMENSIONS	61.5*31.5*31
MATERIAL	100% POLY
COLORS	BKWH BLNV GROR

2x 1x



BKWH



GROR



BLNV

ELITE BACKPACK

ARTICLE NUMBER	283662
DIMENSIONS	35*52*19
MATERIAL	100% Polyester
COLORS	BKWH BLNV GROR

2x 1x 1x



ANRD



BKWH



GRNY

CORE PADEL COMBI

ARTICLE NUMBER	283601
DIMENSIONS	57*33*28
MATERIAL	100% Polyester
COLORS	ANRD BKWH GRNY

2x 6x



BKWH



ANRD



GRNY

CORE BACKPACK

ARTICLE NUMBER	283421
DIMENSIONS	54 x 33 x 13
MATERIAL	100% POLY
COLORS	ANRD BKWH GRNY

2x 1x 1x 2x



BAGS

PADEL FOOTWEAR



FOOTWEAR TECHNOLOGIES

COMFORT



OrthoLite®
With its innovative long-term cushioning, and lightweight, highly breathable foam, the OrthoLite® insole enhances comfort on and off the court. The moisture management helps to keep the foot cool, dry and comfortable. On top of that, the insole is machine-washable.



Sock Support System
Fully integrated elastic sock construction for initial comfort and better support.



HEAD TRI-NRG
HEAD's complete support technology. First, NRG Neutralizes impact in the heel area, then it is Rigid in the midfoot area for excellent torsional support properties and densities in each area of the shoe are key elements in this HEAD footwear technology.



HEAD Cooling System
Perforations in the outsole, midsole and sockliner ensure great ventilation in the bottom of the shoe. Also includes a breathable upper mesh material that provides optimal cooling.

STABILITY



DeltaStrap
Triangle shaped midfoot straps are integrated into the lacing for best stability and an individual fit.



HEAD Lockdown Strap
Midfoot straps integrated into the lacing system keep your foot in place.



HEAD Energy Frame
Inspired by our ski boots, the TPU wings guarantee the best stability when moving sideways. These stability elements have been specifically designed and developed for sports where lateral support is extremely important. This technology is a key element on all our stability products.



HEAD Heel Stabilizer 180°
TPU Brace that wraps around the heel for best fit and support.



HEAD Lateral Control
HEAD includes additional lateral stability on all our top performance shoes to help avoid rolling over during extreme slides.



HEAD T-KORE 360°
Highlighted by the shoe's design, HEAD T-KORE 360° brings together the performance technologies that ambitious players need. The innovations give your shoe a core strength, with enhanced stability, abrasion resistance and torsional support.

DURABILITY



HEAD Hybrasion+
A special rubber compound developed for tennis shoes. Guarantees the best traction for all court surfaces while still providing excellent durability for players who slide a lot.



SuperFabric®
Extremely abrasion resistant and at the same time really flexible upper material.



HEAD Hybrasion
Non-Marking rubber compound that provides good grip and offers great durability on all surfaces.



HEAD Drift Defense
In order to have a complete durable shoe, the upper of a tennis shoe needs to be durable as well, especially around the toe and medial forefoot area. HEAD uses an abrasion resistant rubber or a TPU layer in the Drift Defence technology to protect this area during aggressive toe drags.

FOOTWEAR

SPRINT PRO 3.5 SANYO



Lightweight performance meets ultra-modern, breathable comfort in a shoe designed for Sanyo Gutierrez who is looking for a shoe, to move quickly around the court.

UPPER

- high abrasion resistant SuperFabric vamp material
- Sock construction
- Triangle lacing strap
- TPU heel counter

MIDSOLE

- Low-to-the-ground
- Minimal heel-to-toe offset
- Three EVA densities
- Ventilated 3D-anti torsion shank



MEN

CLAY COURT



273602



273612



273622

FOOTWEAR

PADEL RACQUETS

BALLS

BAGS

FOOTWEAR

ACCESSORIES

SPRINT PRO 3.0 SF CLAY



Upgraded with the radical SuperFabric® material - which was tested by NASA - this shoe mixes lightweight performance with extraordinary durability.

UPPER	MIDSOLE
high abrasion resistant SuperFabric vamp material	Low-to-the-ground
Sock construction	Minimal heel-to-toe offset
Triangle lacing strap	Three EVA densities
TPU heel counter	Ventilated 3D-anti torsion shank



MEN

WOMEN



REVOLT PRO 4.0 CLAY



Built for aggressive baseliners who are as tough on footwear as they are on opponents, this new performance tennis shoe takes durability to the extreme.

UPPER	MIDSOLE
Strong and durable mesh	Higher heel to toe drop
Engineered PU molded chassis	Triple density midsole
Internal TPU heel counter	3D anti torsion midfoot shank
Integrated lacing straps	



MEN



WOMEN



SPRINT PRO 3.5 CLAY

Lightweight performance meets ultra-modern, breathable comfort in a shoe designed for attacking tournament players looking to move quickly around the court.

UPPER	MIDSOLE
Lightweight, fully knitted mesh upper	Low-to-the-ground
Half-sock construction	Minimal heel-to-toe offset
Triangle lacing strap	Three EVA densities
TPU heel counter	Ventilated 3D-anti torsion shank
Rubber toe cap	



MEN

CLAY COURT				
	273032	273052	273072	273092

WOMEN

CLAY COURT			
	274032	274052	274072

SPRINT TEAM 3.5 CLAY

Lightweight and exceptionally breathable, this shoe offers straight-out-of-the-box comfort for players of all levels.

UPPER	MIDSOLE
Breathable and lightweight mesh	Low-to-the-ground
Comfortable lining materials	Minimal heel-to-toe offset
Toe and medial protection	Torsion shank



MEN

CLAY COURT		
	273312	273332

WOMEN

	274312	274332



REVOLT PRO 4.0 JUNIOR CLAY



Engineered for competitive juniors who are aggressive from the baseline, this new shoe is a close takedown of the adult version and offers superb durability.

UPPER	MIDSOLE
Strong and durable mesh	Comfortable EVA midsole
Engineered PU molded chassis	Torsion shank
Internal heel counter	
Integrated lacing straps	

JUNIOR

CLAY COURT



275012

275032

SPRINT 3.5 JUNIOR



Enjoy straight-out-of-the-box comfort and performance in an ultra-lightweight and breathable shoe that is made for intermediate juniors.

UPPER	MIDSOLE
Breathable mesh	Comfortable EVA midsole
Durable synthetic leather	
Adaptive fit lace loops	
Toe and medial protection	

JUNIOR

ALLCOURT



275102

275112

275122

275132

SPRINT VELCRO 3.0 KIDS



Ideal for beginners aged between 4 and 10, this shoe has a Velcro closure for easy on and off. Kids can also wear this for other sports.

UPPER	MIDSOLE
Breathable air mesh	Comfortable EVA midsole
Elastic laces and velcro	
Angle strap	
Soft collar and lining materials	

KIDS

ALLCOURT



275202

275212

275222

MEN'S SIZES

UK	5.5	6	6.5	7	7.5	8	8.5	9	9.5	10	10.5	11	11.5	12	13
US	6.5	7	7.5	8	8.5	9	9.5	10	10.5	11	11.5	12	12.5	13	14
EU	38.5	39	40	40.5	41	42	42.5	43	44	44.5	45	46	46.5	47	48.5
JP	24.5	25	25.5	26	26.5	27	27.5	28	28.5	29	29.5	30	30.5	31	32

WOMEN'S SIZES

UK	3.5	4	4.5	5	5.5	6	6.5	7	7.5	8	9				
US	5.5	6	6.5	7	7.5	8	8.5	9	9.5	10	11				
EU	36	36.5	37	38	38.5	39	40	40.5	41	42	43				
JP	22.5	23	23.5	24	24.5	25	25.5	26	26.5	27	28				

JUNIOR'S SIZES

UK	13 K	13.5 K	1	1.5	2	2.5	3	3.5	4	4.5	5	5.5	6	6.5	
US	13.5	1	2	2.5	3	3.5	4	4.5	5	5.5	6	6.5	7	7.5	
EU	31.5	32	33	33.5	34	34.5	35	36	36.5	37	38	38.5	39	40	
JP	19.5	20	20.5	21	21.5	22	22.5	23	23.5	24	24.5	25	25.5	26	

KIDS SIZES

UK	9.5 K	10 K	10.5 K	11 K	11.5 K	12 K	12.5 K	13 K	13.5 K	1	1.5	2	2.5	3	
US	10	10.5	11	11.5	12	12.5	13	13.5	1	2	2.5	3	3.5	4	
EU	27	27.5	28	29	30	30.5	31	31.5	32	33	33.5	34	34.5	35	
JP	16	16.5	17	17.5	18	18.5	19	19.5	20	20.5	21	21.5	22	22.5	

PADEL ACCESSORIES



GRIPS
BUMPER

GRIPS



PADEL PRO

The overgrip of the legendary Sanyo Gutiérrez, you'll enjoy unrivaled feel maximum grip every time you step on court.



ARTICLE NUMBER	285111
ARTICLE NUMBER	285121
COLORS	● BK ● BL ● GR ● MI ● PK ○ WH ● YW



SANYO PRO GRIP

The overgrip of the legendary Sanyo Gutiérrez, you'll enjoy unrivaled feel maximum grip every time you step on court.

ARTICLE NUMBER	285888
COLORS	○ WH



XTREMETRACK™

XTREMETRACK is a tacky overwrap for club players who need a firm grip and additional control.

ARTICLE NUMBER	285124
THICKNESS	0.6 mm / 0.02 in
WEIGHT	8.5 g / 0.3 oz
ASSORTED COLORS	○ x4 ● x2 ● x2 ● x4



XTREMESOFT™

Add more tackiness and absorption to your handle with the XTREME SOFT overwrap.

ARTICLE NUMBER	285104
THICKNESS	0.5 mm / 0.02 in
WEIGHT	8.5 g / 0.3 oz
COLORS	● ● ● ● ● ● ● ●



HYDROSORB™ COMFORT

The thickest of the HYDROSORB FAMILY, the HYDROSORB COMFORT offers increased cushioning and comfort as well as the family's typical stickiness.

ARTICLE NUMBER	285313
THICKNESS	2.1 mm / 0.08 in
WEIGHT	20 g / 0.7 oz
COLORS	● ○

BUMPER



ANTISHOCK SKIN PADEL

With its weight of only 6 grams, this supreme skin protects your racquet from shock and scratches while maintaining its balance at the same time.

ARTICLE NUMBER	288503
----------------	--------

GRIPS



 /HEADPADEL_OFFICIAL

 /HEADPADEL

 /HEAD_PADEL

 /HEADPADEL

HEAD[®]
.COM/PADEL